



POWER LEVER PRO

EN CH

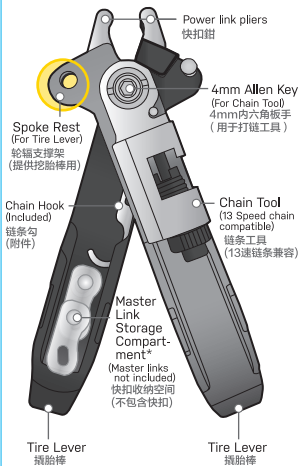
Power Lever Pro is compatible with all types of master links. Power Lever Pro 兼容所有类型的快扣。



Scan for more info

The chain tool is compatible with single and multi-speed chains up to 13 speed, including Sram® Flattop chains.

链条工具兼容单速和多速链，最高可达13速，包括Sram®平顶链。



NOTE: Power Lever Pro is not designed to be used on heavy duty, thick casing downhill or extreme offroad riding type tires.

Power Lever Pro 不建议用于胎壁较厚实的下坡车或极限越野骑行类型的轮胎。

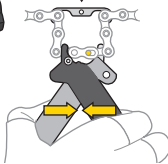
WARNING

Never exceed the 7Nm torque range when tightening to prevent possible tool damage.

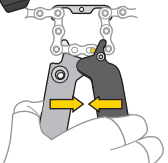
避免工具损坏，紧固时请勿超过7Nm的扭矩范围。

POWER LINK PLIERS 快扣链条拆卸钳

REMOVAL 拆卸

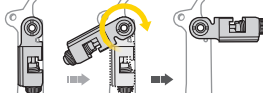


INSTALLATION 安装

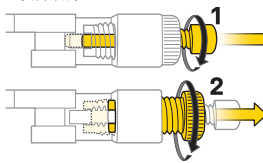


CHAIN TOOL 链条工具

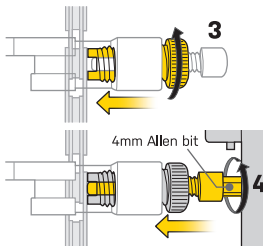
DEPLOY 展开



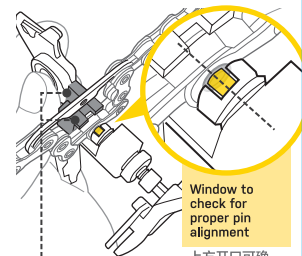
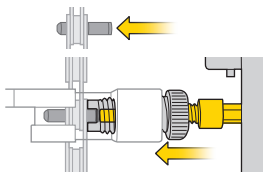
CHAIN BREAKER PIN RELEASE 松开顶针



CHAIN PIN REMOVAL 移除插销

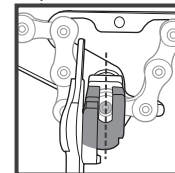


CHAIN PIN INSTALLATION 安装插销



Window to check for proper pin alignment

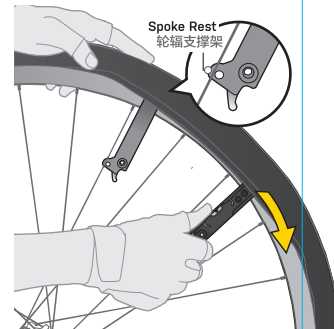
上方开口可确认顶针是否对准插销



Make sure pin aligns with chain fences to avoid chain tool damage

确认顶针对准插销，避免链条工具损坏

TIRE LEVERS 撬胎棒



Spoke Rest 辐条支撑架

*SRAM® is a registered trademark of SRAM Inc. Copyright © Topeak Inc. TTL009L4EN 2023-21