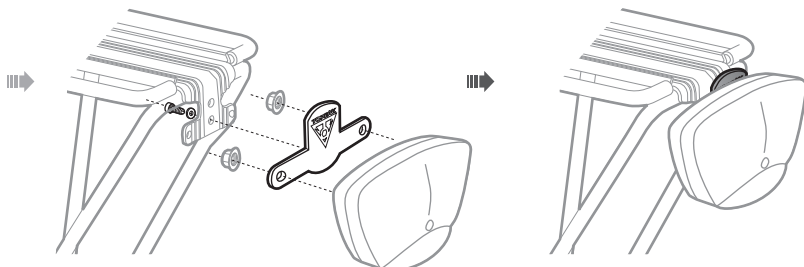
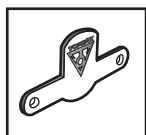


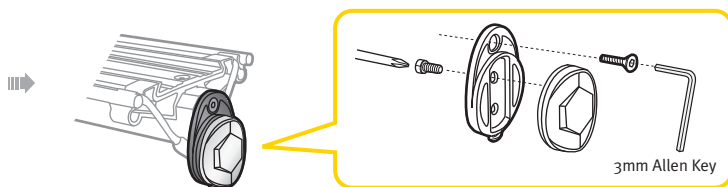
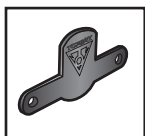
Tail Light Mount is used for mounting rear lights with 80mm (center to center) mounting holes on the Topeak Tubular Rack or MTX BeamRack.

## INSTALL TAIL LIGHT MOUNT ON TUBULAR RACK

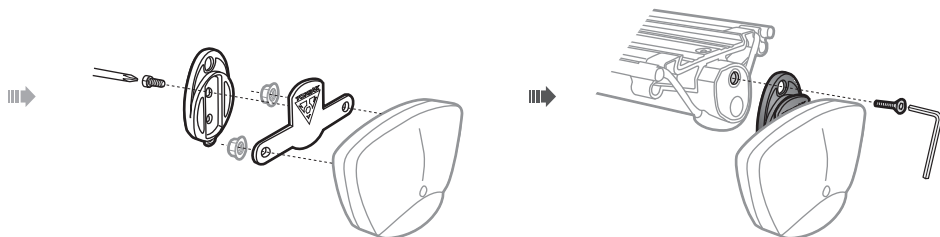


tail light (not included)

## INSTALL TAIL LIGHT MOUNT ON MTX BEAM RACK



3mm Allen Key



tail light (not included)

### LIMITED WARRANTY

2-year Warranty: All mechanical components against manufacturer defects only.

#### Warranty Claim Requirements

To obtain warranty service, you must have your original sales receipt. Items returned without a sales receipt will assume that the warranty begins on the date of manufacture. All warranties will be void if the product is damaged due to user crash, abuse, system alteration, modification, or used in any way not intended as described in this operating manual.

\* The specifications and design are subject to change without notice.

Topeak products are available only from professional bicycle shops. Please contact your nearest Topeak authorized bicycle dealer for any questions. For customers in the USA, call: 1-800-250-3068 Website: [www.topeak.com](http://www.topeak.com)

Copyright © Topeak, Inc. Printed in Taiwan / 2006

M-TC1016-GB 2/06